

Compact Dry™

Simply better.

Compact Dry™ offers a simple procedure to detect and quantify microorganisms in foods, beverages, raw materials, cosmetics, other consumer goods, and environmental monitoring samples.



COMMONLY TESTED APPLICATIONS

Total Count (TC)

Escherichia coli (ECO)

Vibrio parahaemolyticus (VP)

Yeast and Mold (YM)

Bacillus cereus (BC)

Heterotrophic Water (AQ)

E. coli and Coliform (EC)

Rapid Total Plate Count (TCR)

Salmonella spp. (SL)

Coliform (CF)

Rapid Yeast and Mold (YMR)

Pseudomonas aeruginosa (PA)

Enterobacteriaceae (ETB)

Listeria monocytogenes (LM)

Listeria spp. (LS)

Staphylococcus aureus (XSA)

Enterococcus (ETC)

SAMPLE PREPARATION

Indicator organisms

- Add 10 grams (ml) of product to a sterile container.
- Add 90 ml of diluent.
- Homogenize and dilute accordingly.
- Add 1 ml of dilution to Compact Dry plate. NO NEED FOR SPREADER.
- Incubate inverted at recommended test parameters.

Please refer to kit inserts for product-specific instructions.

FEATURES & BENEFITS

- Ready to use
- Self-diffusing media
- Innovative design
- Convenient
- Room temperature storage
- Widest available parameters and broadest application
- Fast and accurate results



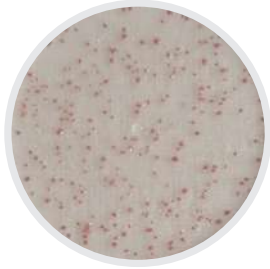
AVAILABLE TESTS Please refer to kit inserts for product-specific instructions.

Compact Dry **TC**



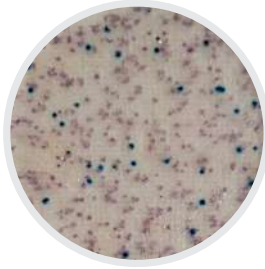
35°C for 48 hours
AOAC PTM

Compact Dry **TCR**



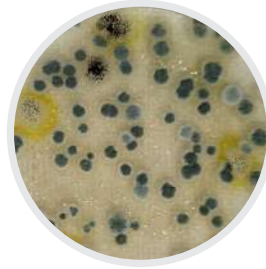
35°C for 24 hours
AOAC PTM

Compact Dry **EC**



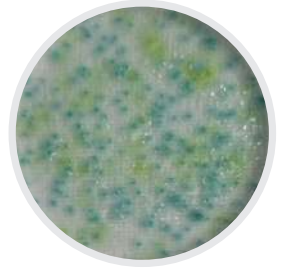
35°C for 24 hours
AOAC PTM

Compact Dry **YM**



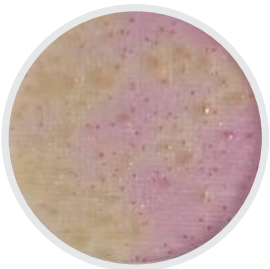
25°C for 5–7 days
AOAC PTM

Compact Dry **YMR**



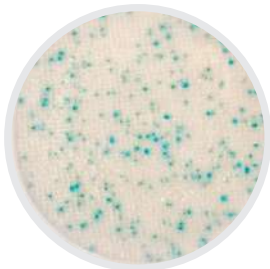
25°C for 48–72 hours
AOAC PTM

Compact Dry **ETB**



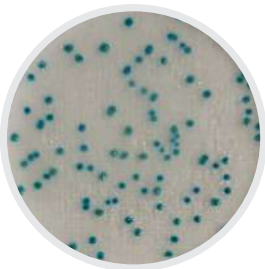
37°C for 24 hours
AOAC PTM

Compact Dry **XSA**



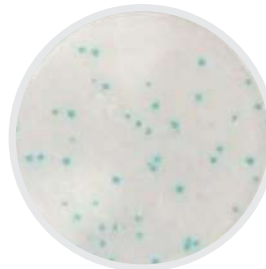
37°C for 24 hours
AOAC PTM

Compact Dry **CF**



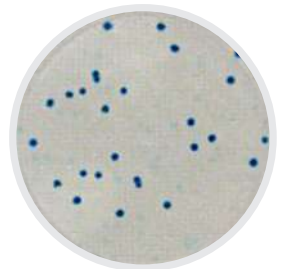
37°C for 24 hours
AOAC PTM

Compact Dry **BC**



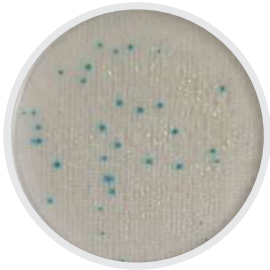
30°C for 24 hours
AOAC PTM

Compact Dry **ECO**



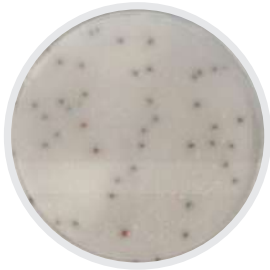
35°C for 24 hours

Compact Dry **LS**



36°C for 24–48 hours

Compact Dry **LM**



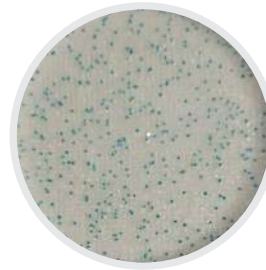
37°C for 24–48 hours

Compact Dry **PA**



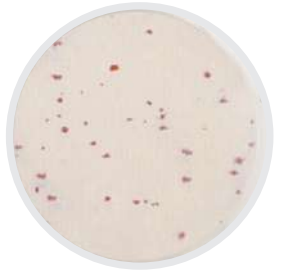
35°C for 48 hours

Compact Dry **ETC**



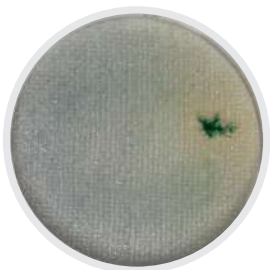
37°C for 20–24 hours

Compact Dry **AQ**



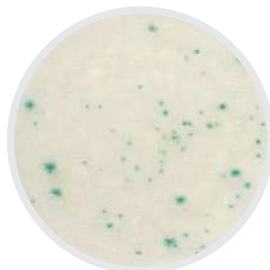
36°C for 48 hours

Compact Dry **SL**



42°C for 20–24 hours

Compact Dry **VP**



35–37°C for
20–24 hours

Compact Dry[™]
Simply better.

Contact us today
sales@compact-dry.com
compact-dry.com

